

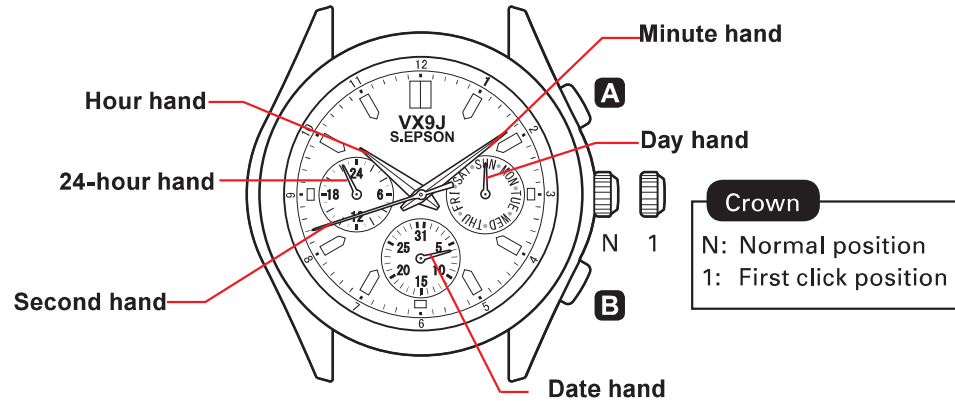
CAL.VX9J

3 Hands 3 Eyes

1/3 Instructions

Features

- ◆ Hour, minute and second hands
- ◆ Day, date and 24-hour indicators



Movement Size	12 3/4 ^{mm}
Outside Diameter	ø29.50 mm x 26.00 mm (3-9H) x 29.36 mm (12-6H)
Casing Diameter	ø28.60 mm x 25.60 mm (3-9H) x 28.60 mm (12-6H)
Height	3.99 mm
Battery	SR927SW
Battery Life	Approximately 3 years



S.EPSON Products

JAPAN TECHNOLOGY & QUALITY

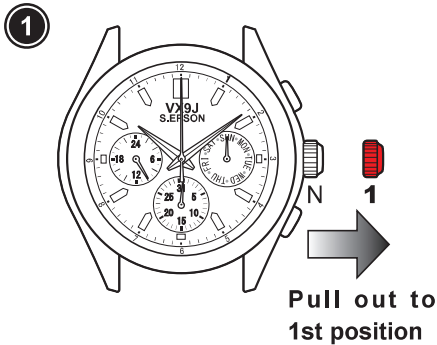
www.timemodule.com

CAL.VX9J

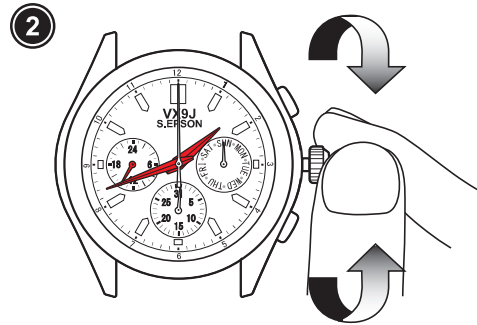
3 Hands 3 Eyes

2/3 Instructions

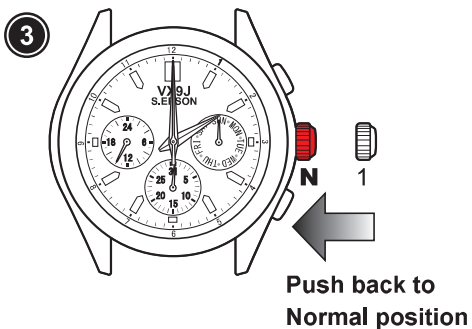
How to set time



- Pull the crown out to the 1st click position when the second hand is at the 12 o'clock position.



- Turn to set the time taking AM/PM into consideration.



- Push the crown back to the normal position.

◆ Advance Setting Technique

- The 24-hour hand moves correspondingly with the hour hand.
- When setting the hour hand, check that the 24-hour hand is correctly set.
- When setting the minute hand, advance it 4 to 5 minutes ahead of the desired time and then turn it back to the exact time.

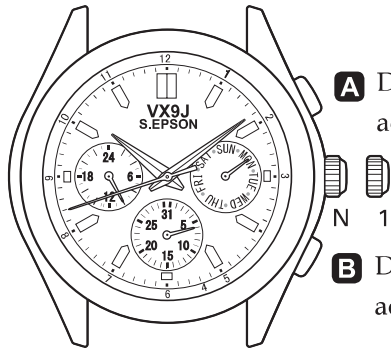


CAL.VX9J

3 Hands 3 Eyes

3/3
Instructions

How to set date and day of the week



A Day Correction: With each pressing of the button A, the day hand advances to the next day.

N 1

B Date Correction: With each pressing of the button B, the date hand advances one day.

◆ Note

- Do not set the date and the day hands between 9:00 p.m. and 4:00 a.m. Otherwise, they may not move properly.
- While setting the date and the day hands, check that they move properly in one-day increments.
- It is necessary to adjust the date on the first day after a 30-day month and February.



S.EPSON Products
JAPAN TECHNOLOGY & QUALITY
www.timemodule.com